



Welcome to our first Royal College of Midwives James Lind Alliance Research Prioritisation Project newsletter!



Jude and Jenny at RCM conference

As project leads, we are pleased to share an update on how our research prioritisation progress is progressing. Since our project launch on 17 July 2023, we have been busy working with our James Lind Advisor Dr Nahid Ahmed, our Steering Group and, more recently, our Project Partners to reach the point where we are almost ready to launch our first online survey.

This project is important as maternity research receives less funding than many other areas of healthcare. The RCM is bringing together a range of stakeholders to discover the gaps in evidence across all areas of midwifery practice and maternity care and to agree which are the most important for future research to address.

The final top 10 research priorities will be championed by the RCM and other organisations in order to influence funders and policy makers.

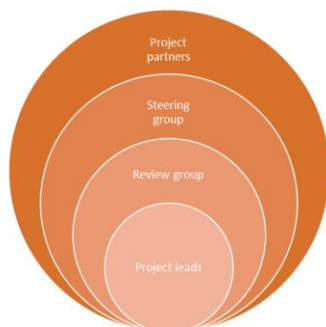
Working with the James Lind Alliance (JLA):

We are thrilled to be working with the JLA. It is a non-profit making organisation, and in relation to our project, involves bringing together women and birthing people, their families and friends; midwives, midwifery students and maternity support workers (MSWs) organisations.



**James
Lind
Alliance**

As co-leads of the project we are supported by Priority Setting Partnerships^{CM} Head of Research and Information and Dr Yana Richens, Senior Research Leader, appointed by the NIHR. We also have a dedicated Information Specialist, Louise Deighton-O'Hara from MIDIRS.



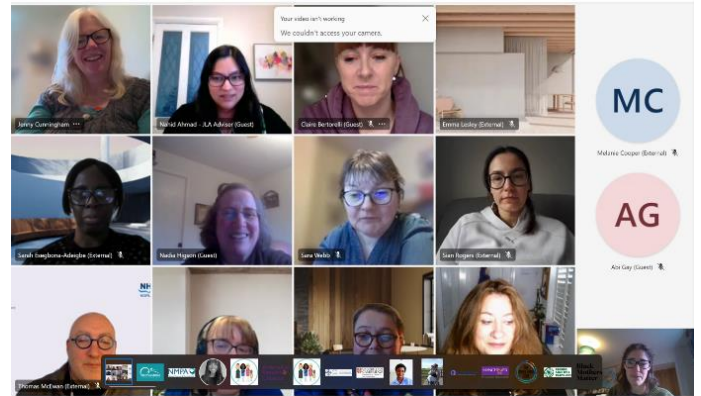
The structure of the project

In addition to the JLA proposed structure, we have a Review Group, three eminent Professors of Midwifery to guide us and ensure academic rigour. Prof Helen Cheyne from the University of Stirling, Prof Vanora Hundley from Bournemouth University and Prof Julia Sanders from Cardiff University.

The project will shortly be included on to the James Lind Alliance [website](#).

Introducing our Steering Group:

We were thrilled to receive over 60 applications for Steering Group membership and it was a difficult process to decide who to invite to join us. Membership includes midwives, a midwifery student, MSWs and service user representation from across the UK. Members bring a wide range of perspectives and experiences to the group.



Steering Group meeting in December 2023

You will soon be able to see names of our Steering Group members on our RCM project webpage and the JLA website.

Our Project Partners:

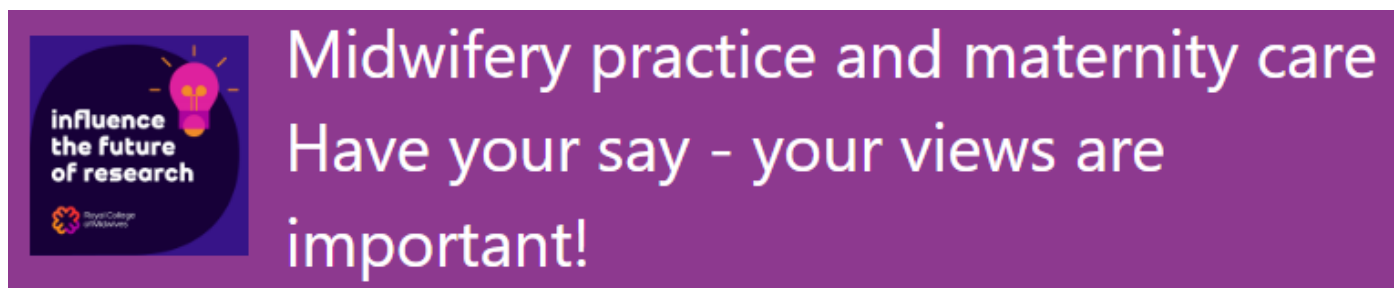
The project is supported by a fantastic range of Project Partners and we are adding new organisations every week – these Partners are committing to raise awareness of the project across their networks. We are holding our first Project Partner meeting on 8 January 2024. Please get in touch on researchpriorities@rcm.org.uk if you have not received your invitation.



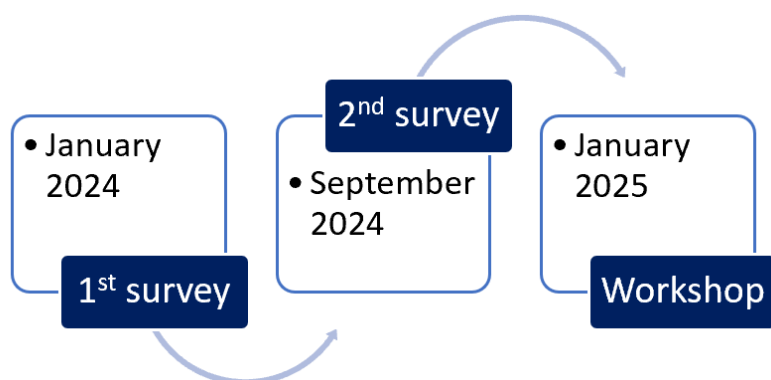
New Project Partners can register and play an important part in the project until it concludes in May 2025. There is a simple Microsoft Forms that you can complete [here](#).

Project next steps

The first project survey opens in early to mid-January. We will be inviting midwives, midwifery students, MSWs, women and birthing people, their supporters and service user organisations to respond to this survey. We'd love to hear your ideas and suggestions about what information is needed to improve midwifery practice and maternity care. If you would like to have the survey sent to your email address you can complete a simple Microsoft Forms [here](#).



The survey title



The project timeline

The second survey in September 2024 will ask people to rank the list of priorities which we will have gathered from responses of the first survey.

The final stage will be in-person workshop in January 2025 where the final top 10 list is confirmed. We will be inviting people to take part in the workshop nearer the time.

Survey Dissemination

We will be providing Project Partners with resources to help members take part in the survey. This will include content for social media posts and newsletters. In addition, if you have a house publication you would like us to write for, please contact us. When we launch the survey, we will have a poster with the survey link available which can be printed out and used in any setting. We will be working with our Project Partners to reach people in different communities around the UK.

What happens at the end of the project?

We will produce a report in May 2025 and use this to champion the top 10 priorities. We hope that all those involved in midwifery and maternity care will also raise awareness of our priority list and be able to encourage others to do the same.

Please share this newsletter with anyone you think may also be interested.

If you would like any more information, we have a project specific email address where you can contact us directly: researchpriorities@rcm.org.uk

With best wishes,

Jenny & Jude

RCM Research Advisors and Co-Leads for the project

